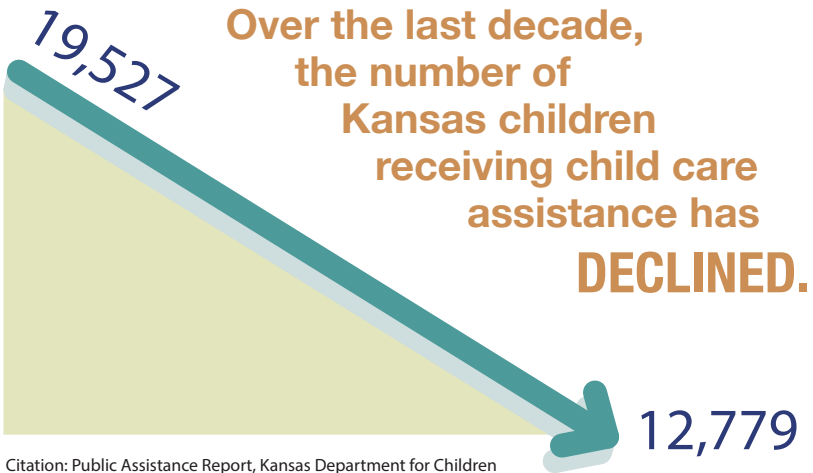


# FOR KANSAS FAMILIES, THE PATH OUT OF POVERTY STARTS WITH A JOB. AND THE PATH TO A JOB STARTS WITH CHILD CARE.

Child care assistance helps Kansas parents get back to work or enables them to go look for work. It is a critical step in helping low-income families get off welfare rolls, onto payrolls, and out of poverty.



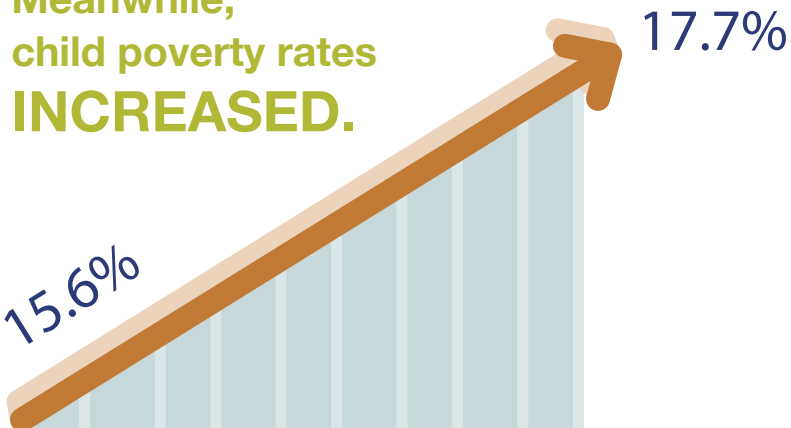
Citation: Public Assistance Report, Kansas Department for Children and Families, Family Services Division. (Fiscal Year 2006 and Fiscal Year 2015).

Today, only a  
**SMALL  
NUMBER**  
(8%)  
of eligible  
Kansas children  
receive child care  
assistance.



Citation: Analysis of data by KAC from U.S. Census Public Use Microdata Sample (PUMS) 2011–2013 data.

Meanwhile,  
child poverty rates  
**INCREASED.**



Citation: U.S. Census Bureau, American Community Survey 1-year Estimates, 2006 and 2014.