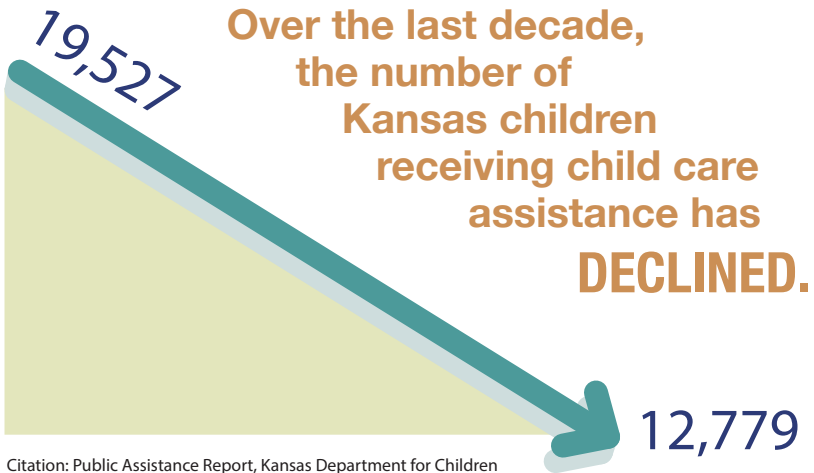


FOR KANSAS FAMILIES, THE PATH OUT OF POVERTY STARTS WITH A JOB. AND THE PATH TO A JOB STARTS WITH CHILD CARE.

Child care assistance helps Kansas parents get back to work or enables them to go look for work. It is a critical step in helping low-income families get off welfare rolls, onto payrolls, and out of poverty.



Citation: Public Assistance Report, Kansas Department for Children and Families, Family Services Division. (Fiscal Year 2006 and Fiscal Year 2015).

Today, only a
**SMALL
NUMBER**
(8%)
of eligible
Kansas children
receive child care
assistance.



Citation: Analysis of data by KAC from U.S. Census Public Use Microdata Sample (PUMS) 2011–2013 data.

Meanwhile,
child poverty rates
INCREASED.



Citation: U.S. Census Bureau, American Community Survey 1-year Estimates, 2006 and 2014.